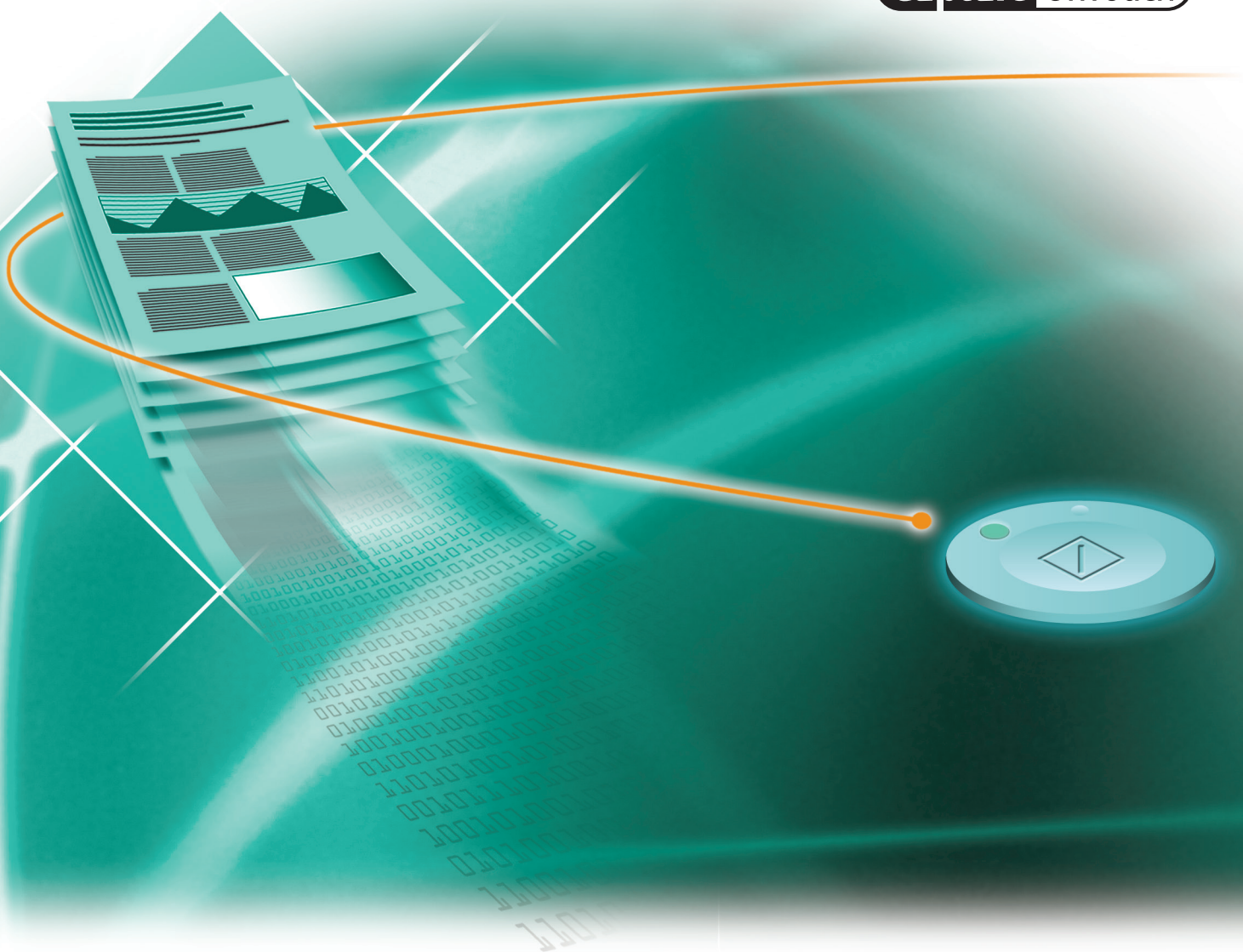




Capture OnTouch



Increase User Productivity by Simplifying the Document Scanning Process

Canon's CaptureOnTouch software can help increase user productivity by simplifying the document scanning process. The intuitive interface enables users to quickly and efficiently scan documents and automatically distribute them to Windows®, Mac®, iPad®, iPhone®, and Android devices, and beyond.

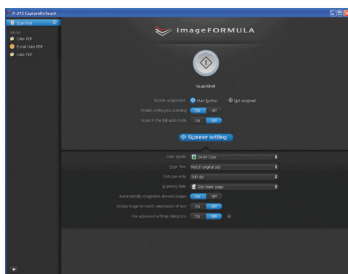
Simplicity That Boosts Productivity

Developed for quick and easy scanning, CaptureOnTouch leads users through the complete scanning process, step-by-step, to quickly and efficiently scan and distribute documents. Since CaptureOnTouch has an intuitive user interface, businesses can implement scanning without delay, as this software requires little to no training.

CaptureOnTouch can help add extra value by simplifying the scanning process for those businesses striving to improve document workflow and management operations. Even if familiar with document scanning and electronic data storage, businesses can benefit from reduced user errors and save valuable time through faster processing and improved control of file destinations. These benefits, along with the application's easy-to-use functions, help eliminate many scanning challenges, resulting in greater workflow efficiencies and productivity.

CaptureOnTouch

The complete CaptureOnTouch software application provides two convenient scanning methods. The “Scan First” method is ideal for ad hoc walk-up scanning, allowing users to scan documents before selecting the file format and destination. For routine scanning tasks, there are user-defined “Scan-To-Job” buttons, which are accessed through the “Select Scan Job” method. This helps to automate distribution and archival of documents for specific workflows.

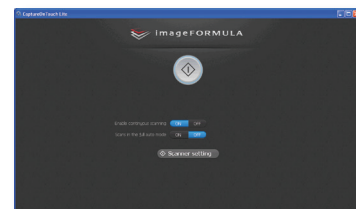


Emphasis on ease of use and workflow efficiencies is also apparent, as walk-up or routine scanning can be initiated in three easy ways: using the buttons on the scanner; via the CaptureOnTouch user interface; or, from the CaptureOnTouch menu in the task tray. No time is wasted searching for, and launching, the scanning application. In addition, with simple one-touch distribution to e-mail, folder, printer, or third-party application as well as automated document archiving, user efficiency and productivity can be increased.

The complete CaptureOnTouch software application is bundled with most Canon imageFORMULA® mobile and office document scanners, and, depending on the Canon scanner model being used, CaptureOnTouch supports both Windows and Mac environments.

CaptureOnTouch Lite

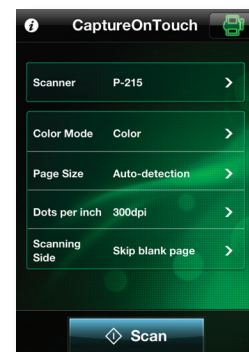
Scanning on the run requires quick connectivity and minimal setup. Upon connecting to a computer, imageFORMULA mobile scanners can be set to immediately launch Canon CaptureOnTouch Lite, which resides in the scanners’ firmware.



This “Plug-and-Scan” capability lets users easily initiate scanning without installing drivers or imaging applications, thereby decreasing the time needed to initiate a scan. CaptureOnTouch Lite supports many of the features found in the complete CaptureOnTouch software application. Depending on the Canon mobile scanner model being used, CaptureOnTouch Lite supports both Windows and Mac environments.

CaptureOnTouch Mobile

Canon CaptureOnTouch Mobile is a free downloadable app that allows users to scan, save, and send paper-based information to other applications, including third-party cloud-based applications. It works with iPad, iPhone, and Android devices to help operate select Canon imageFORMULA mobile and office document scanners. It also allows users to adjust basic scanner settings. CaptureOnTouch Mobile is available from the App StoreSM or from the Google[®] Play Store.



Canon
*image*ANYWARE

1-800-OK-CANON
www.usa.canon.com

Canon U.S.A., Inc.
One Canon Park
Melville, NY 11747