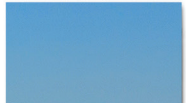
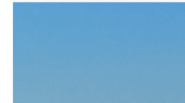


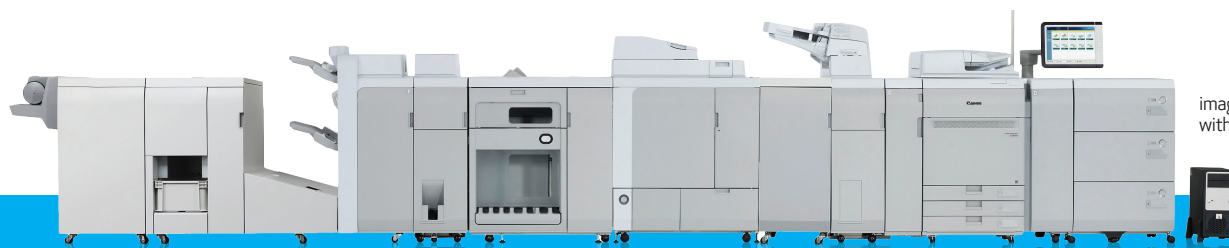
COLOR PRODUCTION
DIGITAL PRESS



imagePRESS
C850/C750

imagePRESS C850/C750

BIG GROWTH OPPORTUNITIES IN A SMALL FOOTPRINT



imagePRESS C850 model shown with optional accessories.

PRODUCT AT-A-GLANCE

PRODUCTIVITY

- Production speeds of up to 85 ipm (color and B/W)
- Maintains rated speed on uncoated stocks up to 220 gsm (80 lb. Cover)
- 7,650-sheet feeding capacity with up to six different sources
- Wide array of in-line feeding and finishing accessories

PRINT QUALITY

- Vibrant and consistent image quality on a wide variety of media
- 2400 x 2400 dpi print resolution
- Precise, front-to-back registration
- Gloss optimization
- Variety of calibration options to help maximize color consistency

CHOICE OF WORKFLOWS

- PRISMAsync Color Print Server
- imagePRESS Server F200
- imagePRESS Server G100
- imagePRESS Printer Kit

ENVIRONMENT

- Meets ENERGY STAR® standards
- Rated EPEAT Gold
- Compliant with RoHS
- Recyclable toner bottles
- No VOCs in consumables

THE CANON imagePRESS C850/C750 SERIES— THE SUPERB FIT FOR EVERY PRINT ENVIRONMENT

IN-PLANT/CRD

The imagePRESS C850/C750 digital color production presses deliver the productivity, ease of use, and versatility your operation requires. These presses let you do more with fewer operators. Optional PRISMA software solutions and PRISMAsync provide simple, intuitive operation.

Jobs are rapidly processed and can be finished in-line with minimal operator intervention. To enhance productivity, customers can submit work to the CRD via a wide variety of available software solutions, including Canon's enterprise-wide print management leveraging uniFLOW and PRISMAdirect.

QUICK PRINT/PRINT-FOR-PAY

Finally, there's a solution that meets the needs of the quick print market, thanks to its high quality, reliability, and versatility, delivering powerful opportunities in a small footprint. Intuitive, easy-to-use user interfaces help streamline prepress and production tasks.

Customers can expand their capabilities to handle a range of media, including long sheets up to 30 inches and envelopes in different sizes and weights. In-line finishing options facilitate the output of ring-bound presentations, trifold flyers such as sell sheets, and multipage, full-bleed brochures.

COMMERCIAL PRINT

With quality that rivals offset, these digital presses offer many advantages:

- Gloss Optimization;
- Consistent color, thanks to the stable engine platform with CV toner;
- Multi D.A.T., real-time color correction and calibration features, including G7[®] calibration on the PRISMAsync controller; and,
- Excellent, front-to-back registration.

The imagePRESS C850 Series is ideal for short runs and variable data printing. It's also a cost-effective backup to your other devices.

These presses support outstanding efficiency, with the ability to integrate seamlessly with existing workflow solutions. And with multiple in-line folding and binding options and the ability to output envelopes, you'll be able to realize new business opportunities.



PRODUCT FEATURES



A SMALL FOOTPRINT

Enjoy quality results with new imaging technologies, outstanding versatility, and powerful performance—all in a small footprint. An ideal fit for a business ready for growth.



MANY MEDIA CHOICES

Please customers with the ability to print on attention-getting stocks and envelopes in a range of sizes. Expand new applications with duplex long sheet printing of up to 30 inches.



VERSATILE IN-LINE FINISHING

Produce a broad range of print products, including three-fold brochures, saddle-stitched and square-folded brochures, postcards, business cards, presentation and training materials, flyers, and perfect bound books.



GLOSS OPTIMIZATION

As with offset printing, images closely match the gloss levels of the paper stock.

HIGH-IMPACT COLOR

ADVANCED TECHNOLOGIES



R-VCSEL

Images have remarkable clarity and definition with 2400 dpi x 2400 dpi print resolution. The 32-beam red VCSEL laser produces clear, crisp output at high speed.



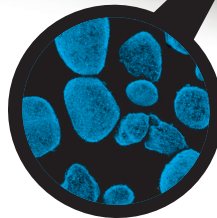
CV TONER

Canon CV toner offers amazingly vibrant images on a wide variety of media with smooth particles and a low melting point.



ADVANCED IMAGE TRANSFER BELT

Advanced Image Transfer Belt (ITB) increases the toner transfer efficiency to help achieve high quality on even textured or embossed stocks for custom and premium applications.



CV TONER AND ADVANCED ITB

Enables quality printing on smooth and textured stocks.



OUTSTANDING STABILITY



CALIBRATION TOOLS

The imagePRESS C850/C750 color digital presses offer automatic, real-time calibration and provide tools to help reduce calibration time to reliably deliver high-quality, repeatable, predictable output with minimal operator intervention.



VF DEVELOPER UNIT

The developer unit maintains a cool temperature and efficiently uses developer to help ensure stable image quality over time.



COMPACT REGISTRATION MODULE (CRM)

The CRM combines digital sensors together with registration rollers to help ensure that sheets are correctly positioned during print runs for high-quality results every time.



HUMIDITY SENSOR/AIRFLOW UNIT

The precisely controlled internal environment and airflow help maintain consistent, high-quality images across print runs.

SMART OPERATION

APPLICATION VERSATILITY



MEDIA SUPPORT

These presses offer support for various types of media, including textured paper, thin-coated paper from 100 gsm, and various sizes as well as envelopes.



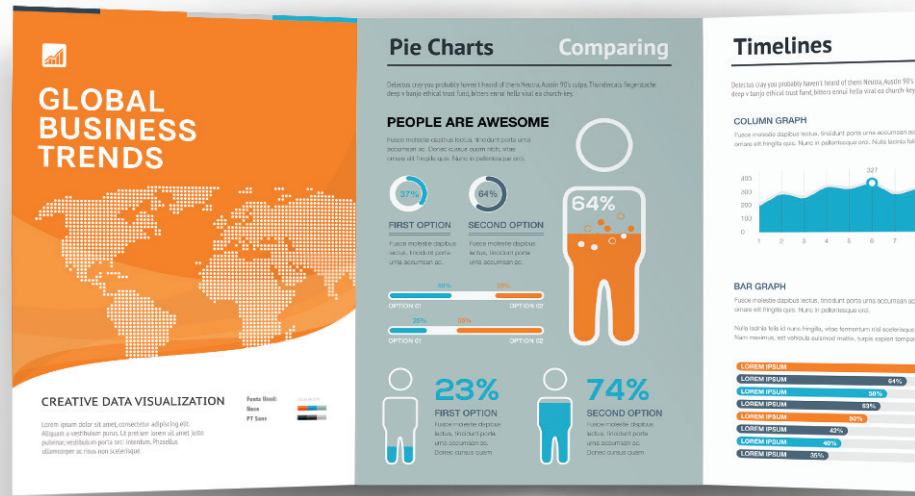
LONG-SHEET PRINTING

Expand your application offerings with the capability to print and auto duplex on long sheets up to 30 inches.



IN-LINE FINISHING

Achieve “white-paper-in, finished-product-out” workflows with Canon’s extensive in-line finishing options. Maintain high quality, even on half-folded spines with the in-line creasing feature of the optional Multi Function Professional Puncher.*



MAXIMIZED UPTIME



LARGE MEDIA CAPACITY

A 7,650-sheet input capacity** allows for unattended production runs. And with up to six different sources, operators can load many different media types for mixed-media jobs.



PRODUCTION PRINT SPEEDS

Reach impressive production speeds of up to 85 Letter impressions per minute on a wide range of media. Without sacrificing quality, these presses can run at maximum speed on uncoated stock of up to 220 gsm and can automatically duplex jobs on up to 300 gsm media.



ADVANCED TWIN-BELT FUSING TECHNOLOGY

Canon’s innovative induction heating and cooling technologies use two belts that allow the press to fuse at a lower temperature, minimizing heat fluctuations while printing on different media. This helps keep the press productive on regular and mixed-media jobs while controlling gloss and image quality.



ON-THE-FLY REPLACEMENT

Keep the press running and maintain a steady workflow with the ability to replace paper and toner during a print run.

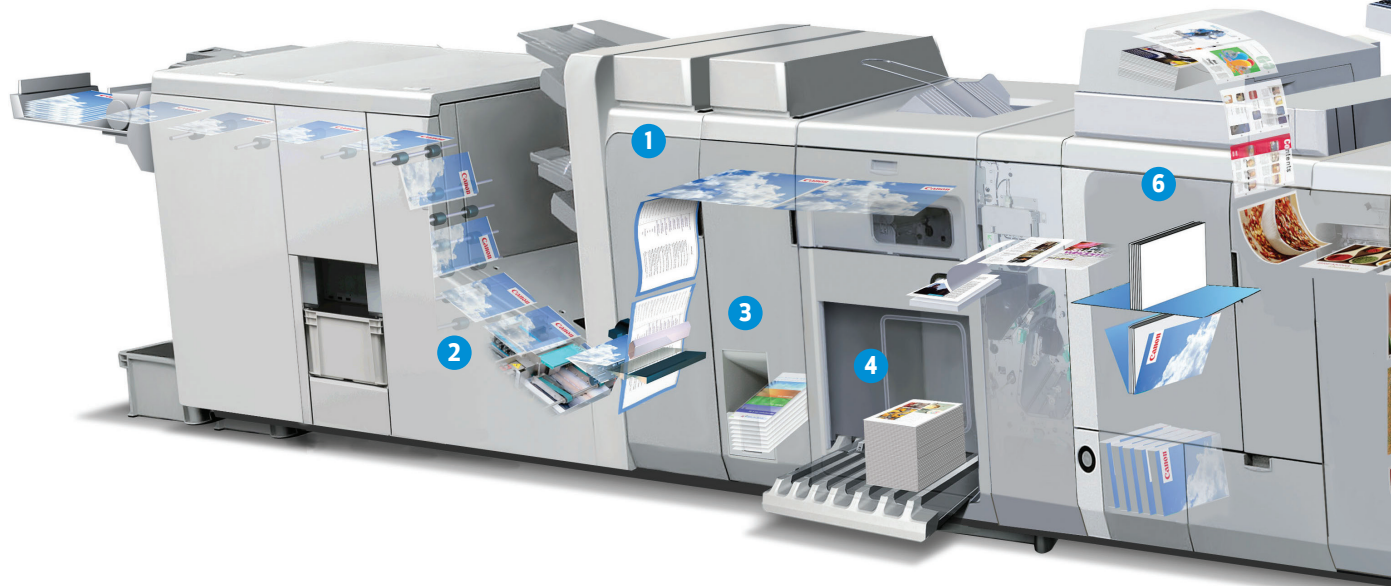


* Not available at initial launch.

** With optional Multi-Drawer Paper Deck.

INNOVATION END-TO-END

The imagePRESS C850/C750 color production digital presses: More versatility, more automation, and better performance—all in a lot less space.



KEY FEATURES

FINISHING OPTIONS

1 STAPLE[▲] AND SADDLE FINISHER

Corner staple up to 100 sheets or saddle-stitch* up to 100-page booklets in paper sizes up to 13" x 19.2". An external side jogger keeps paper in neat stacks. An optional 2/3-hole puncher is also available.

2 BOOKLET TRIMMING

High productivity with large-capacity trim waste bin and on-the-fly waste removal allow for continuous run. These modules work with the Saddle Finisher to produce professional, full-bleed booklets in-line.

SQUARE-FOLD BOOKLET-MAKER[▲]

Deliver professional-looking, lay-flat booklets with the speed and simplicity of in-line saddle-stitching. The SDD BLM300C Professional Booklet-Maker extends booklet-making capabilities up to 120 pages.

3 PAPER FOLDING UNIT

Offer promotional pamphlets, brochures, and more with the ability to produce Z-fold, C-fold, accordion fold, and double-parallel fold documents.

4 HIGH-CAPACITY STACKER

Realize maximum productivity with unload-while-run capability, helping to provide uninterrupted printing and virtually unlimited stacking. The integrated DFD interface lets configurations include various third-party finishing devices.

5 PROFESSIONAL DIE PUNCH AND CREASE UNIT[■]

The Multi Function Professional Puncher handles a broad range of media sizes and weights, and it includes a creasing function that helps reduce paper or toner cracking on the spine.

MAX RING BINDER[▲]

Produce up to 50- or 100-sheet ring-bound booklets in-line to eliminate the handling and finishing steps between printing and binding.

6 PERFECT BINDER

Using hot glue, this module binds covers to book blocks of up to 400 pages at 20 lb. Bond and can trim on all three sides for full-bleed books or manuals.

7 DOCUMENT INSERTION UNIT

This module enables insertion of slip sheets or preprinted inserts and covers.

* Available only on Saddle Finisher.

▲ Not shown.

■ Not available at launch.



IMAGING

- 8 CV TONER**
Canon's CV toner helps produce consistent, vivid, and sharp images on a wide range of media with a realistic, offset-like finish.
- 9 R-VCSEL LASER TECHNOLOGY**
R-VCSEL technology provides clear, crisp 2400 x 2400 dpi output at high speeds.
- 10 ADVANCED TWIN-BELT FUSING TECHNOLOGY**
This technology optimizes temperature control for outstanding productivity on media at weights as low as 52 gsm and as high as 300 gsm.
- 11 E-DRUM**
The durable, reliable E-Drum is designed for excellent image transfer.

USABILITY

- 12 PRISMAsync USER INTERFACE***
The PRISMAsync interface expands possibilities with an intelligent server and media-driven workflow. It offers up to eight hours of advance production planning and scheduling, plus uniform workflow with other PRISMAsync-driven Canon digital presses, such as the varioPRINT DP Line, VarioPrint 6000+ Series, and imagePRESS C10000VP Series.
 - 13 OPERATOR ATTENTION LIGHT***
You'll always know if your job is progressing smoothly, because this helpful light displays the status of the press at a glance and alerts staff in time for an operator to intervene and keep production running.
- CANON PRESS CONSOLES*****
The Canon Press Console provides easy access to operator settings, such as the media library, press stability controls, and output appearance settings.

PAPER FEEDING OPTIONS

- 14 MULTI-DRAWER PAPER DECK**
Three paper drawers offer up to 6,000-sheet capacity and maximum size of 13" x 19.2". All drawers accommodate all supported media weights and types except envelopes.
- POD DECK LITE[▲]**
This deck's 3,500-sheet capacity supports paper sizes up to 13" x 19.2" and envelopes in a range of sizes.
- LONG-SHEET TRAY[▲]**
Along with the Stack Bypass Tray, it can feed long sheets up to 30 inches.
- ADVANCED FEEDING TECHNOLOGIES**
The Multi-Drawer Paper Deck and POD Deck Lite come standard with Air Separation and Air Assist features that help provide excellent paper feeding, especially of coated stocks.

* Available only with PRISMAsync Color Print Server.

** Available only with the imagePRESS Server F200/G100 and imagePRESS Printer Kit.

[▲] Not shown.

STREAMLINED WORKFLOW



PRISMAsync COLOR PRINT SERVER

Flexible, cutting-edge controller that's impressively easy to use.

A SINGLE POINT OF CONTROL

Canon's PRISMAsync Color Print Server consolidates control of your entire production system into a single point. Whether preparing simple jobs such as scan-to-file or complex jobs such as page programming, you can easily perform a range of tasks from one user interface.

INTUITIVE OPERATION

Prepress and production tasks are intuitively clear with a highly visual user interface design. Templates, automated workflows, and hot folders allow for the loading of repetitive job settings.

CONFIGURABLE WORKFLOW SUPPORT

Whatever your workflow, the PRISMAsync Print Server can be set up to meet your precise needs with its configurable user interface. The embedded CIP4-compliant JDF/JMF workflow connector allows integration into JDF/JMF enabled workflows. And seamless integration with the PRISMA software suite offers access to easy-to-use, professional, make-ready and document management solutions.

TOTAL PRODUCTION CONTROL

Stay in control of your schedule with plan-ahead production. The Job Scheduler lets you monitor multiple jobs, receive custom notifications, and change priorities as needed. Smart, state-of-the-art features, such as Page Programming and DocBox, let operators store and manipulate jobs directly from the PRISMAsync controller interface.

PRISMASYNC REMOTE MANAGER

Operators and administrators can manage queues, submit print jobs, and reroute jobs among multiple PRISMAsync-driven engines via the standard PRISMAsync Remote Manager software.

The unique, Web-based Multi-Press Scheduler provides remote monitoring from virtually any workstation or mobile device on your network.

 POWERED BY
Adobe PDF Print Engine
with Mercury RIP architecture



PRISMAsync Print Server

CERTIFIED BY ADOBE FOR THEIR MERCURY RIP ARCHITECTURE

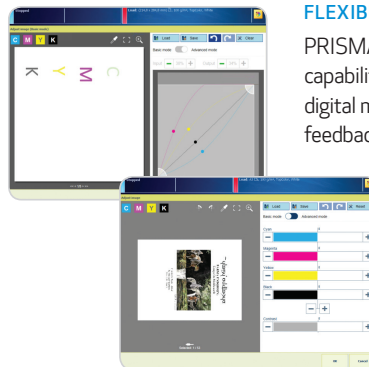
Enables digital printers to process their jobs in a fast and flexible manner, boosting RIP speed to an outstanding level.

FIRST DFE-EMBEDDED G7 CERTIFIED SYSTEM

PRISMAsync incorporates an in-RIP G7 calibration method. Without a need for third-party software or complex procedures, print professionals can quickly and easily calibrate their PRISMAsync-driven imagePRESS color presses to help achieve a near-neutral print condition.

FLEXIBLE COLOR CONTROLS

PRISMAsync offers flexible color correction capabilities such as the CMYK curve editing and digital moiré reduction with immediate visual feedback via realistic pixel precise previews.



imagePRESS SERVER F200/G100

Fiery® technology helps improve efficiency and performance.

WORK ACROSS PLATFORMS

The imagePRESS Servers integrate smoothly with your various prepress workflows, third-party software, and EFI™ solutions.

EFFICIENT JOB MANAGEMENT

An intuitive print management interface for Fiery servers, the Command WorkStation® centralizes and helps simplify job management. Operators can monitor and direct jobs, automate workflows, and preview and adjust documents.

SPOT-ON™ COLOR MATCHING

The powerful Spot-On utility helps remove the guesswork from color matching, offering an intuitive interface that makes it fast and easy to define or modify spot colors. It eliminates the time-consuming task of looking up CMYK values.

DIRECT PRINTING FROM APPLE® MOBILE DEVICES

Enhance press accessibility with the ability to print directly from compatible Apple® iPad®, iPhone®, and iPod touch® devices. Using an enterprise's wireless connection, users can print from the native print feature of a mobile device.

* Supported on Apple devices running iOS 4.2 or later.



imagePRESS Server F200



imagePRESS Server G100



imagePRESS PRINTER KIT

Embedded controller for entry-level production.

Designed for operations that use a printer driver workflow and don't require job or queue management tools, the imagePRESS Printer Kit is a cost-efficient choice for a genuine Adobe® PostScript® controller.

CUSTOMIZED SOLUTIONS

A SUPERB FIT

EXPAND YOUR OPPORTUNITIES

Highly innovative, the imagePRESS C850/C750 color digital production presses offer end-to-end solutions and outstanding day-to-day reliability that can help your operation achieve greater success in its market segment.

With a choice of advanced print controllers and scalable feeding and finishing options, this press is configured to help you surpass your goals.

The small footprint and environmentally conscious features make this press a superb fit for almost every operation.



LONG-SHEET PRINTING

Auto duplex print up to 30-inch sheets to help expand application offerings, such as dust jackets and six-page brochures.



STAPLED DOCUMENTS

Produce stapled documents, such as presentation handouts, of up to 100 sheets, with both corner and double stapling capabilities.



SADDLE-STITCHED BOOKLETS

In-line saddle-stitching provides up to 100-page* or 120-page** brochures, catalogs, and programs. Square-fold options and unique Saddle Press technology* help to limit bowing, so booklets lie flat. In-line creasing† for high-quality half-folding and saddle-stitching significantly reduce paper or toner cracking on the spine.



FULL-BLEED BOOKLETS

Print booklets in sizes up to 13" x 19.2" and benefit from in-line, face- and two-knife trimming for high-quality, full-bleed booklet output.



PERFECT-BOUND BOOKS

Deliver soft-cover, glue-bound books of up to 400 pages in-line.



FOLDED BROCHURES

Produce flyers, mailings, letters, and folded leaflets in-line with the folding unit.



OFF-LINE FINISHING

Via the High-Capacity Stacker, the imagePRESS C850 and C750 presses output neat stacks of loose leaves that can be unloaded to feed your off-line, post-processing equipment—and all without interrupting print production.



BOUND PRESENTATIONS AND MANUALS

In-line die punching creates ready-to-bind documents for a variety of binding methods, such as plastic comb, velo bind, or color coil binding, eliminating the need for prepunched sheets or off-line hole punching.†



The in-line Ring Binder creates up to 200-page punched and bound books in one uninterrupted run, also eliminating the off-line binding step.



ENVELOPES

Offer complete, end-to-end marketing solutions with the ability to print envelopes in a range of sizes, including #10, Monarch, 6" x 9", 9" x 12", and 10" x 13".

* Requires Booklet Finisher-W1.

** Requires SDD BLM300C Professional Booklet-Maker.

† Not available at initial launch. Contact your Authorized Canon Dealer for availability.

All paper capacity numbers are based on 20 lb. Bond (80 gsm).

TEAMING WITH CANON

A COMPETITIVE ADVANTAGE

We'll help you increase productivity and improve your bottom line. Our extensive print experience translates to deep insight into industry characteristics and trends as well as customer goals and challenges. Canon's understanding of various printing markets allows us to tailor solutions to meet your specific needs.

TOTAL SOLUTIONS

The Canon portfolio of technology offerings is among the broadest in the industry. From digital, sheet-fed, web-fed, and wide-format systems to inkjet, photo printers, and workflow solutions, Canon has a customized solution for your business.

Customers share their experiences. Visit USA.CANON.COM/PRODUCTIONPRINTING



SPECIFICATIONS



MARKING ENGINE

Technology:	Electrophotography
Resolution:	Up to 2400 x 2400 dpi
Halftones:	256-Level Grayscale
Print Speed	Simplex/Duplex
	C850 C750
8.5" x 11":	Up to 85 ipm Up to 75 ipm
11" x 17":	Up to 43 ipm Up to 37 ipm
12" x 18":	Up to 40 ipm Up to 35 ipm
13" x 19":	Up to 38 ipm Up to 33 ipm
Paper Size:	3.94" x 5.83" to 13" x 19.2"
Paper Feeding	
Standard:	Up to 1,650 Sheets (20 lb. Bond)
Maxi um:	Up to 7,650 Sheets (20 lb. Bond)
Paper Weight:	14 lb. Bond to 110 lb. Cover* (52 gsm to 300 gsm)*
Envelopes:**	#10 Business, Monarch, 6" x 9", 9" x 12", 10" x 13"
Duplexing/Perfecting:	Automatic Duplex/Perfect (Any supported stock except envelopes)
Power Source:	Single-Phase 208 V/20 A
Dimensions (H x W x D):	56.1" x 60.2" x 36.8" (Includes Operator Panel)

INPUT ACCESSORIES

Multi-Drawer Paper Deck-C1

Paper Capacity:	Up to 6,000 Sheets (20 lb. Bond)
Paper Size:	5.5" x 7.2" to 13" x 19.2"
Paper Weight:	14 lb. Bond to 110 lb. Cover (52 gsm to 300 gsm)
Dimensions (H x W x D):	40.9" x 37.4" x 31.4"
Power Source:	120 V/15 A

POD Deck Lite-C1

Paper Capacity:	Up to 3,500 Sheets (20 lb. Bond)
Paper Size:	5.5" x 5.83" to 13" x 19.2"
Paper Weight:	14 lb. Bond to 110 lb. Cover (52 gsm to 300 gsm)
Envelopes:**	#10 Business, Monarch, 6" x 9", 9" x 12", 10" x 13"
Dimensions (H x W x D):	22.5" x 28.2" x 27.0"

Stack Bypass-B1

Paper Capacity:	Up to 100 Sheets (20 lb. Bond)
Paper Size:	3.94" x 5.83" to 13" x 19.2" (Long Sheet up to 30"****)
Paper Weight:	14 lb. Bond to 110 lb. Cover (52 gsm to 300 gsm)
Envelopes:	#10 Business, Monarch, 6" x 9", 9" x 12", 10" x 13"

Duplex Color Image Reader-K1

Image Sensor:	CCD
Document Size:	Statement to 11" x 17"
Resolution:	Up to 600 x 600 dpi, 256 Gradations
Tray Capacity:	Up to 300 Sheets (20 lb. Bond)
Scan Speed:	Up to 300 dpi Up to 600 dpi
BW (duplex/simplex):	Up to 200/120 ipm Up to 120/120 ipm
Color (duplex/simplex):	Up to 140/120 ipm Up to 70/70 ipm

FINISHING ACCESSORIES

Multi Function Professional Puncher-A1*

Paper Weight	
Plain:	20 lb. Bond to 110 lb. Cover (75 gsm to 300 gsm)
Coated:	20 lb. Bond to 110 lb. Cover (80 gsm to 300 gsm)
Paper Size:	12" x 18", 11" x 17", LTR, LGL, LTR-R, STMT
Die Set Patterns:	Loose Leaf 3-Hole/5-Hole, Velo Bind 11-Hole, Plastic Comb 19-Hole, Twin Loop 21-Hole/32-Hole, Color Coil 44-Hole, Crease
Dimensions (H x W x D):	40.9" x 17.5" x 31.2"
Power Supply:	120 V/15 A

High-Capacity Stacker-H1

Offset Stack Capacity:	Up to 6,000 Sheets (20 lb. Bond)
Top Tray Capacity:	Up to 200 Sheets (20 lb. Bond)
Paper Size:	7.2" x 7.2" to 13" x 19.2"
Paper Weight:	14 lb. Bond to 110 lb. Cover (52 gsm to 300 gsm)
Max. Connectivity:	1 Unit
Dimensions (H x W x D):	40.9" x 35.4" x 29.3"
Power Source:	120 V/15 A

Staple Finisher-W1/Booklet Finisher-W1

Tray Capacity	
Top Tray:	Up to 1,000 Sheets (20 lb. Bond)
Lower Tray:	Up to 4,000 Sheets (20 lb. Bond)
Saddle-Stitch Tray:	Up to 30 Booklets or Limitless Corner Stapling, Double Stapling
Staple Positions:	Corner Stapling, Double Stapling
Paper Weight:	14 lb. Cover to 110 lb. Cover (52 gsm to 300 gsm)
Paper Size	
Stapling:	11" x 17", LGL, LTR-R, EXEC, LTR, 12" x 18", 13" x 19.2", Custom Size (8.3" x 11" to 13" x 19.2")
Saddle Finisher:	11" x 17", LGL, LTR-R, 12" x 18", 13" x 19", Custom Size (8.3" x 11" to 13" x 19.2")
Stapling Capacity:	Up to 100 Sheets
Booklet Stapling Capacity (20 lb. Bond)	
Uncoated:	Up to 25 Sheets
Coated:	Up to 10 Sheets
V-Folding:	Up to 5 Sheets without Stitch
Dimensions (H x W x D):	Staple Finisher: 48.8" x 35.0" x 31.2" Booklet Finisher: 48.8" x 41.7" x 31.2"
Power Source:	120 V/15 A

Perfect Binder-E1

Cutting Method:	3-Side Cut/1-Side Cut/No Cut
Finished Book Size:	5.4" x 7.99" to 8.5" x 11.69"
Book Thickness:	10 to 200 Sheets (20 lb. Bond) (up to 0.98")
Body Paper Weight:	14 lb. Bond to 43 lb. Bond (52 gsm to 163 gsm)
Cover Paper Weight:	28 lb. Bond to 110 lb. Cover (90 gsm to 300 gsm)
Trim Range	
Top/Bottom:	0.26" to 1.56"
Side:	0.26" to 1.95"
Dimensions (H x W x D):	53.5" x 36.3" x 31.1"
Power Source:	208 V/15 A

Booklet Trimmer-F1*

Margin Trimming:	Front-edge Trim
Trim Amount:	0.08" to 1.1"
Trim Thickness:	50 Sheets
Paper Weight:	14 lb. Bond to 110 lb. Cover (52 gsm to 300 gsm)
Output Tray Capacity:	30 Booklets
Dimensions (H x W x D):	40.9" x 82.3" x 31.1"

Two-Knife Booklet Trimmer-A1**

Margin Trimming:	Top and Bottom
Trim Amount:	0.08" to 0.59"
Trim Thickness:	50 Sheets
Paper Weight:	14 lb. Bond to 110 lb. Cover (52 gsm to 300 gsm)
Dimensions (H x W x D):	40.9" x 21.1" x 30.3"
Power Supply:	120 V/15 A

Puncher Unit-BS1

(Option for Staple Finisher-W1/Booklet Finisher-W1)

Paper Weight:	14 lb. Bond to 110 lb. Cover (52 gsm to 300 gsm)
Paper Sizes	
2-Hole:	Legal, Letter-R, Custom Size (7.2" x 7.2" to 11.7" x 17")
3-Hole:	11" x 17", Letter, Executive-R, Custom Size (9.4" x 7.2" to 11.7" x 17")

Document Insertion Unit-N1

Tray Capacity	
Upper Tray:	Up to 200 Sheets (20 lb. Bond)
Lower Tray:	Up to 200 Sheets (20 lb. Bond)
Paper Weight:	14 lb. Bond to 110 lb. Cover (52 gsm to 300 gsm)
Paper Size:	11" x 17", 12" x 18", 13" x 19", LGL, LTR, LTR-R, EXEC, Custom Size (7.2" x 7.2" to 13" x 19.2")

Paper Folding Unit-J1

Double Parallel Fold:	Legal, Letter-R
C/Accordion Fold:	Letter-R
Z-Fold:	11" x 17"
Supported Media	14 lb. Bond to 28 lb. Bond (50 gsm to 105 gsm)
Weights:	From Finisher
Power Source:	From Finisher
Dimensions (H x W x D):	46.87" x 13.25" x 31.25"
Weight:	157 lb. (71 kg)

* Engine cassette supports 52 gsm to 220 gsm.

** Requires Envelope Attachment Kit.

*** With optional Stack Bypass-C2 and Long Sheet Tray.
Paper sizes longer than 19.2" can be fed one sheet at a time.

▲ Must connect to Booklet Finisher-W1.

▲▲ Must connect to Booklet Trimmer-F1.

■ Not available at initial launch.

USA.CANON.COM/PRODUCTIONPRINTING



The imagePRESS C850/C750 Series contains multiple components, some of which are manufactured by third parties. Accordingly, Canon makes no representations or warranties with respect to such third-party products. For additional information on any Canon or third-party accessories, contact your Authorized Canon representative.

As an ENERGY STAR® Partner, Canon U.S.A., Inc. has qualified these models as meeting the ENERGY STAR energy efficiency criteria through an EPA recognized certification body. ENERGY STAR and the ENERGY STAR mark are registered U.S. marks. Canon, imagePRESS, and the GENUINE logo are registered trademarks of Canon Inc. in the United States and may also be registered trademarks or trademarks in other countries. Apple, iPad, iPhone, and iPod touch are registered trademarks of Apple Inc. All other referenced product names and marks are trademarks of their respective owners. All screen and printer output images are simulated. Not responsible for typographical errors. Specifications and availability subject to change without notice. ©2016 Canon U.S.A., Inc. All rights reserved.

Federal Law prohibits copying of certain documents. Violators may be subject to penalties. We suggest that you check with your own legal counsel. Canon U.S.A., Inc. and Canon Canada, Inc. intend to cooperate with Law Enforcement Agencies in connection with claims on unauthorized copying.

0916-C850/C750-PDF-MC

